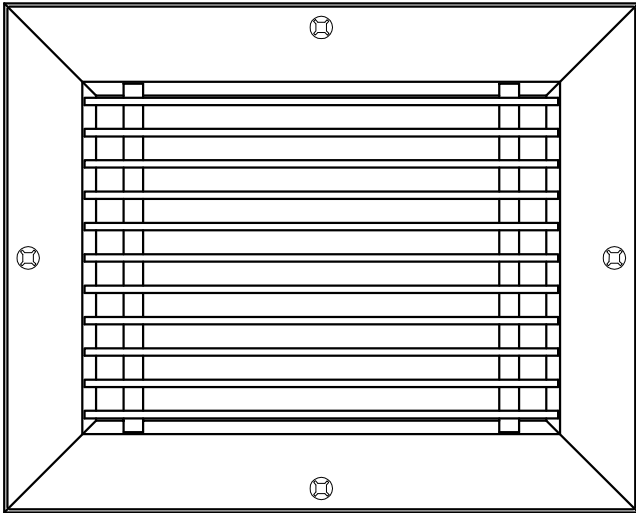


97, 98, 99 ALUMINUM GYMNASIUM GRILLES



BLADE ORIENTATION:

- L - BLADES PARALLEL TO LONG DIMENSION
- S - BLADES PARALLEL TO SHORT DIMENSION

FINISH:

- B12 - WHITE POWDER COAT (OPTIONAL FINISHES AVAILABLE)

OPTIONAL DAMPER:

- VCS3 - OPPOSED BLADE DAMPER COATED STEEL CONSTRUCTION
- VCS3AL - OPPOSED BLADE DAMPER ALUMINUM CONSTRUCTION, MILL FINISH

MATERIAL:

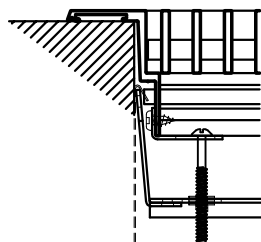
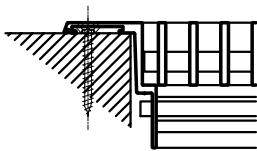
- FRAME - EXTRUDED ALUMINUM
- BLADES - EXTRUDED ALUMINUM
- MANDREL TUBE CORE ASSEMBLY

NOTES:

- LOUVER BLADES ARE FIXED
- MIN. SIZE - 6" x 4" (152 x 102)
- MAX. SIZE - 96" x 48" (2438 x 1219)
- OVERSIZED UNITS AVAILABLE, SUPPLIED WITH DUCT MOUNTING CHANNEL (SEE SUBMITTAL 219729)

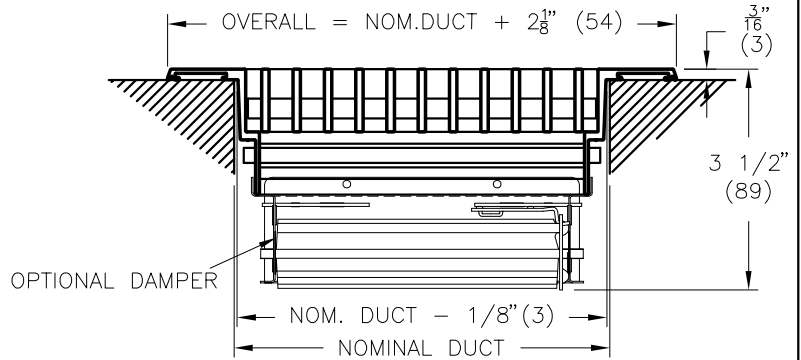
FASTENING OPTIONS:

- A - COUNTERSUNK SCREW FASTENING
- C - CONCEALED MOUNTING (AVAILABLE ON 97 ONLY, MAX. 36" (914) WIDTH)

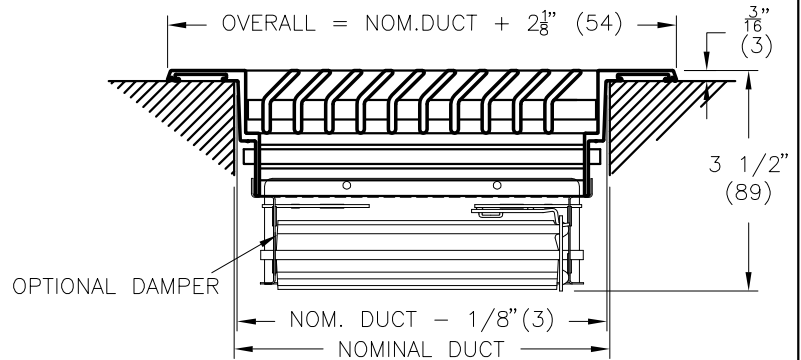


- 0 - FASTENING BY OTHERS

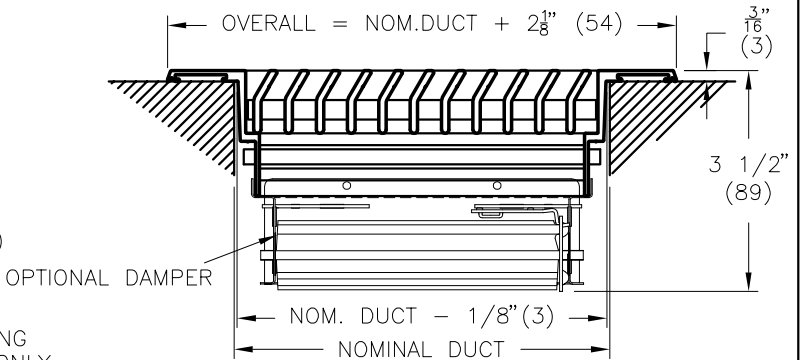
ALL METRIC DIMENSIONS () ARE SOFT CONVERTED. IMPERIAL DIMENSIONS ARE CONVERTED TO METRIC AND ROUNDED TO THE NEAREST MILLIMETER.



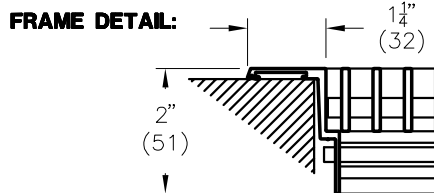
MODEL 97
0° DEFLECTION, 1/2" (13) BLADE SPACING



MODEL 98
45° DEFLECTION, 1/2" (13) BLADE SPACING



MODEL 99
30° DEFLECTION, 1/2" (13) BLADE SPACING



FRAME DETAIL:

PROJECT:		PRICE®	
ENGINEER:		<i>MG</i>	97, 98, 99
CUSTOMER:		222008	ALUMINUM GYMNASIUM RETURN AIR GRILLE
SUBMITTAL DATE:	SPEC. SYMBOL:	2014/05/14	